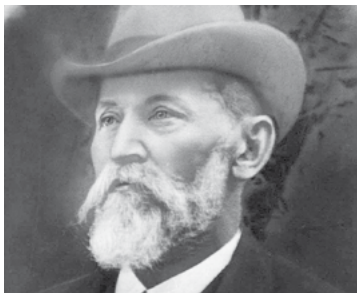


150 years of company history

International Rotating Equipment Conference 2016, Düsseldorf, Germany

New production and workshop

Canned motor pumps in use in an ethane cracker



Company founder Wilhelm Lederle

150 years of company history:

Technical history, pioneering spirit and innovative pumping solutions

More about [company history](#)

Everything started with the delicious juice of the grape. In 1866, Wilhelm Lederle developed the first manual wine pump. 150 years later, the company, which has meanwhile become one of the leading manufacturers of hermetically sealed pumps, under the name of "HERMETIC-Pumpen GmbH", can look back on a successful company history. Even today, for HERMETIC everything revolves around the pumping of valuable, critical and dangerous fluids using pumps built according to the hermetic principle and to the latest technical standards.

International Rotating Equipment Conference, Düsseldorf, Germany, 14.–15.09.2016



Presentation: Mr. Christof Plum

Technology Updates (TU)

Wednesday, 14. September 2016; 12:00 h, Room 1, TU-05

Theme: **HERMETIC "ZART" (Zero Axial and Radial Thrust)**

Presentation: Mr. Thomas Kopp

Liquified Gas

Wednesday, 14. September 2016; 11:00 h, Room 14, Session 2 / 2-2

Theme: **Design and engineering of a large scale canned motor pump for supercritical ethylene pipeline application. Mechanical, hydraulic and thermodynamic aspects.**

Technical Exhibition: you find us on stand B13.

We are looking forward to your visit.

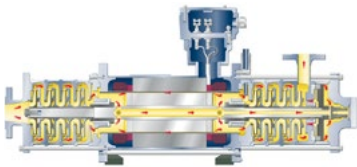
More [information](#)



New production and workshop:

Commitment to the location Gundelfingen

With the new building of production and workshop, the area will be enlarged by 3.500 m² at the location in Gundelfingen. The height of this impressive hall is between 10 and 16 meters. In the new, fifth, production hall, a new high-tech test field is established in which pumps up to 1.6 megawatts of motor power can be tested. Special cranes in the new assembly hall allow the handling and manufacture of pumps up to 30 tons and expansive dimensions. The new hall includes a paint shop, the new shipping and logistics center – bases for an optimized process flow.



Canned motor pumps in use in an ethane cracker

During the modernisation of an ethane cracker plant, HERMETIC-Pumpen GmbH supplied two 12-stage, sealless, canned motor pumps from the CAM 32/6 + 6 series. With this petrochemical plant, the provision of raw materials to the company-owned plastics manufacturers at the integrated site is ensured.

More [information](#)

We hope that you can learn useful details and innovative ideas for your daily business from our newsletter.

Impressum

HERMETIC-Pumpen GmbH

Gewerbestrasse 51 · D-79194 Gundelfingen

phone +49 761 5830-0 · fax +49 761 5830-280

hermetic@hermetic-pumpen.com · www.hermetic-pumpen.com

Geschäftsführer: Nicolaus Krämer (CEO, CCO), Christiane Krämer (CFO), Christian Dahlke (COO), Dr. Roland Krämer (CTO)

Umsatzsteueridentnummer: DE 142212033 · Registergericht Freiburg HRB 365